

Q.Light[®]
phototherapy

Standwagon Standard



Operating Manual

Table of contents

1. Symbols
2. Accessories, assembling, applied load, handling
3. Electrical safety, EMV compatibility, combustion gas
4. Miscellaneous, surroundings
5. Maintenance

Version 10.10.03 - 13/06/04

Art.-No. 90.10.19

© copyright **Q.Products AG**

Q.Products AG
Säntisstr. 11
CH-9401 Rorschach

Tel./Phone : +41 (0) 71 858 20 60
Fax : +41 (0) 71 858 20 61
Email : contact@QProducts.info

www.QLight.info

The Standwagon Standard is developed to allow a safe and easy handling of the **Q.Light®** Photo- and Light therapy devices.

Standwagon Standard will be delivered as far as possible assembled.



You must have read and fully understood the present manual before using and assembling the stand. If you have questions or you are not sure how to use, please contact the manufacturer or your supplier.

Q.Products AG do not assume any liability for nonobservance of this directive.

Stand Standard is intended for the described use only. These instructions have to be kept during the life of the product.

1 Symbols

ATTENTION

Who might connect additional equipment is System-configurator himself and is therefore responsible to ensure that the equipment standards EN 60601-1 and EN 60601-1-1 compliance are kept for the entire system.

List and explanation symbols mentioned on the Standwagon Standard:



The triangle with an exclamation mark shall point important operating characteristics and maintenance requirements to the user. This can be found in the manual.



Load index

(here 150 kg, also with other loads available)

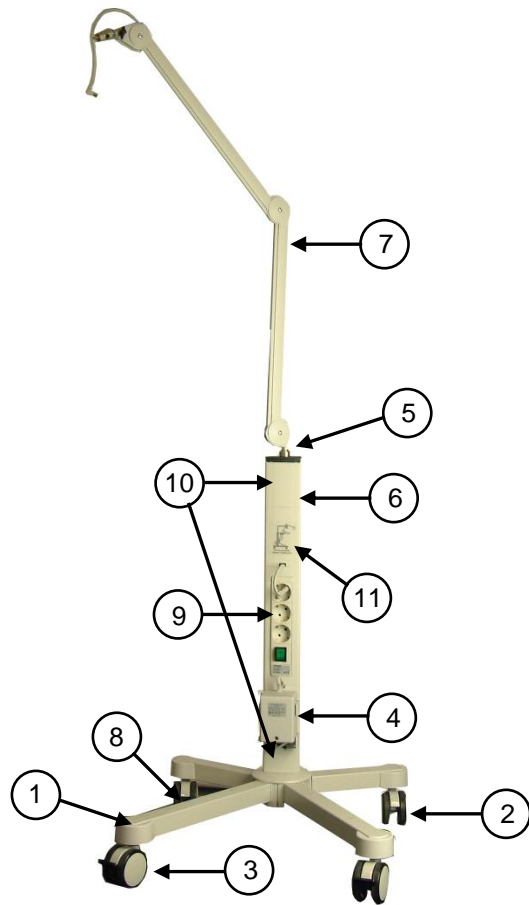
Base frame 50 kg, Table with handle 10 kg, Joint arm 1kg



5°-Tilting-Test

The Standwagon Standard may not be turned down or operated in a position $> 5^\circ$, because otherwise tilting danger exists.

2 Assembling



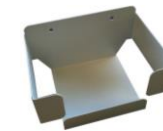
- | | | | |
|-------------------------|----------------------------|--------------------------------|---------------------|
| ① Stand base | ② Leading pulley/roll | ③ Lockable leading pulley/roll | ④ Power supply hold |
| ⑤ Adapter for joint arm | ⑥ Cable winder (back side) | ⑦ Joint arm | ⑧ Cover cap |
| ⑨ Multiple socket | ⑩ Cover strips | ⑪ Label „Kippstabilität“ | |

Accessories (optional)

Table with handle



Box holder



Additional table



2.1 Completeness / Accessories

Unpack the Standwagon Standard and check (based on the above figure) whether all the pieces are delivered.

Along with the Standwagon Standard you get the following accessories:

- 1 pcs. Transformer – Model-No. DE-60-14AL
- 1 pcs. Open-end wrench
- 1 pcs. INBUS

2.2 Assembling

- Screw the leading pulleys with brake (3) into the holes provided on the front „long“ stand feet (1).
- Screw the leading pulleys without brake (2) into the holes provided on the rear „short“ stand feet.
- Screw stand feet on the stand base.
- Remove the upper cover strip (10). Insert the cable of the joint arm (7) from above through the adapter for joint arm (5). Plug the joint arm (7) fully into the adapter (5) and fix it with the locking screw (B) (INBUS).



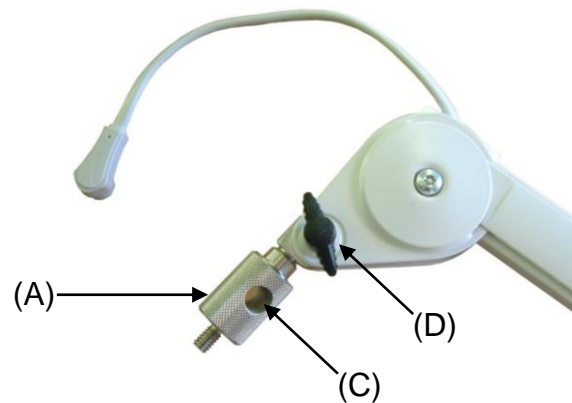
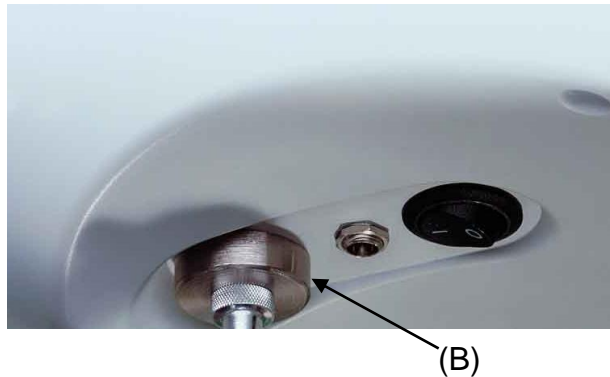
- The transformer is pre-assembled and is provided in the power supply hold (4).
- Connect the cable of the joint arm (7) with the cable of the transformer. After that reassemble the cover strip (10).



2.3 Assembling **Q.Light®** with the joint arm

Set the Standwagon Standard on a flat surface. During assembling and installation the Standwagon Standard has to be unplugged from electricity.

- Please put the Q.Light® device onto the rotating support (A) of the joint arm. By turning the rotating support (A) you screw the thread bolt fully into the screw joint (B) of the Q.Light® device. Fasten the rotating support (A) with the open-end wrench (or a screw driver). For this, please insert the open-end wrench through the hole (C) and turn it clockwise.
- By this simple operation, you can now set the Q.Light® device in the best position to carry out the desired treatment. With the wing nut (D) you are able to adjust the clamping strength.



If you want to remove the Q.Light® device, first remove the power plug. Then open the rotating support (A) by using the open-end wrench (or a screw driver), which you insert through the hole (C) and turn it counterclockwise. By turning the rotating support (A) screw the thread bolt fully out the screw joint of the Q.Light® device. Please hold the Q.Light® device during this process.

2.4 Tip-resistance



Check the stability of the Standwagon Standard by making sure that the fully equipped stand is not tipping at an inclination of more than 10°.

2.5 Leading pulleys/rolls

On the stand base of the Standwagon Standard there are two leading pulleys with brakes.

Before operating the device, make sure that both brakes are working properly. Make sure that the brakes are released before you set the Standwagon Standard in motion. By moving the Standwagon Standard with locked brakes, they get damaged and this could lead into dangerous situations.



Make sure that the power of the pulleys/rollers-brakes are strong enough to hold the Stand Standard incl. assembled Q.Light® on 10° inclined surfaces. Should the tip-resistance not be sufficient, the Standwagon Standard must be labeled according to the 5°-Label-Obligation.

The pulleys/rollers and brakes should be examined every 24 months to your own security. If they fall out, please contact immediately your supplier.

2.6 *Applied load*

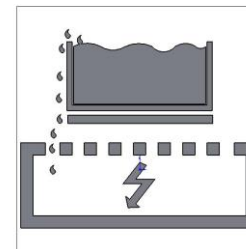
Although all precautions have been observed in order to ensure maximum stability and safety of this product. Please be aware of unevenness of the floor, elevator door frames, cables, etc. to prevent accidents.

It is not permitted to exceed the load capacity of the Standwagon Standard. Please note the maximum load of the Standwagon Standard. Please note the label (11).

3 **Electrical safety**

3.1 *Placement of electrical devices*

3.2 Please take into consideration, that all electrical equipment on the Standwagon Standard not becomes wet. Do not place devices that can leak fluid, over open-top electrical equipment.



3.3 *Gases*

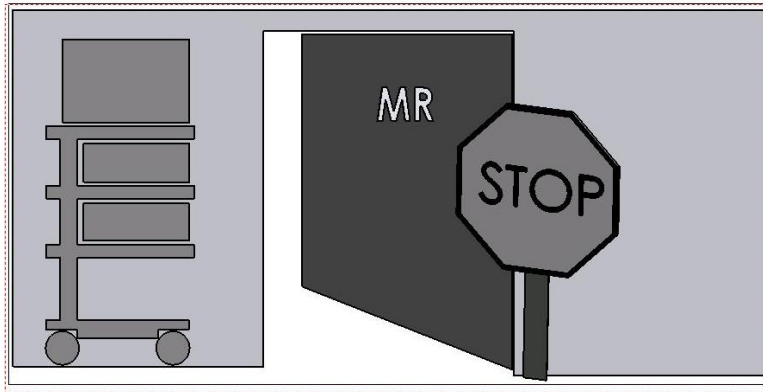
If electrical devices are operated this must not be done close to gases, e.g. anesthetic or other gases. The operator is responsible for a correct use in order to the 60601-1-2 and electromagnetic compatibility = EMC.

3.4 *Cable connector*

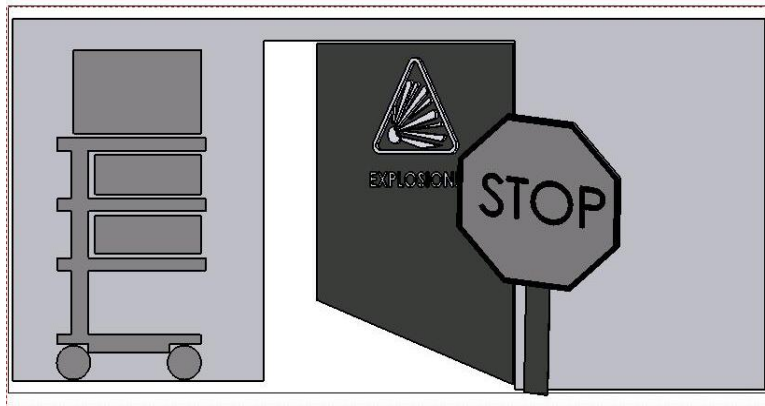
The operator of the Standwagon Standard has to make sure that the cable-connection between cable system of the Standwagon Standard and the Q.Light® device has to be a non-detachable connection or a connection that only can detach with tools.

3.5 EMV

The electromagnetic compatibility of the Q.Light® device, assembled on the Standwagon Standard is tested.



The use of the Standwagon Standard is due to the usage of ferromagnetic materials not permitted in an MRI environment.
This regarding Q.Products AG excludes each liability!



The use of the Standwagon Standard together with isolation transformers within a potentially explosive environment is not permitted.

3.6 Minimum Security

The Q.Products AG is not known a device or accessory (as of 21.02.2006) that the minimum safety of the system decreases. Use only equipment, which are not dangerous. If necessary, this should be clarified by the risk analysis.

4 Miscellaneous

4.1 Disinfection

Please clean the Standwagon Standard with an adequate neutral detergent and disinfected with a surface disinfectant or 30 % alcohol. The Standwagon Standard cannot be sterilized.

Approved disinfection and cleaning liquids are inter alia:

Cidex, Aldasan 200, Kohrsolin, Mellsitt, Gigasept FF, Lysoformin spezial, Spray Aktiv, Terralin, Quartamon Med, Mikrozyd Liquid, Fairy, Pril, Palmolive

4.2 Medical Product Law of MPBetreibV (Germany-EU)

Before any repair, also before a reconsignment, the device has to be cleaned and disinfected with a suitable abstergent agent!

According to Medical Product Law § 6 of MPBetreibV, safety checks (STK) have to be carried out every two years.

The operator may appoint these safety checks and control only to staff who received an appropriate training, knowledge and practical work experience to carry out this duty. Furthermore these specially trained technicians must not underlie restrictions relating the control activities and need to be able to operate appropriate measuring and testing equipment (have to be available for staff).

(Validity area is the Federal Rep. of Germany, otherwise the international guidelines have to be followed.)

Corrective maintenance of the device may only be carried out by trained staff of Q.Products AG.
For all services and maintenance we recommend contacting Q.Products AG.

4.3 Environmental conditions

The Standwagon Standard is designed for the usual operation in hospitals and clinics.

Ambient air temperature:	10°C - 40°C
Atmospheric moisture:	30% - 75%
Barometric pressure:	700hPa – 1060hPa

4.4 Disposal



Electrical and electronic equipment may not be disposed with the household-waste. The consumer is obliged by law to return electronic devices after their life-period to, for this purpose established public assemblies or to the retailer.

Details for this issue are governed by the state law. Please note the symbol on the product which is indicated to this issue. By recycling, material recycling or other forms of recovery/recycling of old electronic devices, you make an important contribution to protect our environment. In Germany, above mentioned disposal rules apply, as well as according to the battery and accumulators regulation.

5 Maintenance

The Standwagon Standard was been developed and built for many years of easy use. Check every 24 months the operation of the following parts to ensure safety.

- Table with handle (optional):
Verify that the mounting screws are tightened and thus the shelf stable and straight.
- Pulleys/rollers:
Check that pulleys/rollers run freely, if both brakes are working properly, the four bolts holding the pulleys/rollers on the underside of the stand base, as well as the pulleys/rollers themselves are sitting firmly in their holders.
- Cabling:
Check main cable for damage and tightness.

To replace the power supply fuse (T 315 mA / 250 V), remove the black cover with the inscription "Fuse" by turning the screw counter-clockwise with a screwdriver.

Replace the fuse and screw to cover back carefully.

Only Q.Products AG approved spare parts are allowed to use for maintenance and repairs!

Please note the sticker on the stands base with its serial number. All serial numbers are archived by Q.Products AG. Using this serial number, maintenance appointments, service checks and warranty repairs can be arranged.