

FLAME BURN

Deep 2nd degree burn on LDI

Location: Left lower leg

Male

Age: 6 Years

Start Q.Light[®]: 03/08/2006

Full Closure: 18/09/2006

Total Treatment Time: 5 weeks

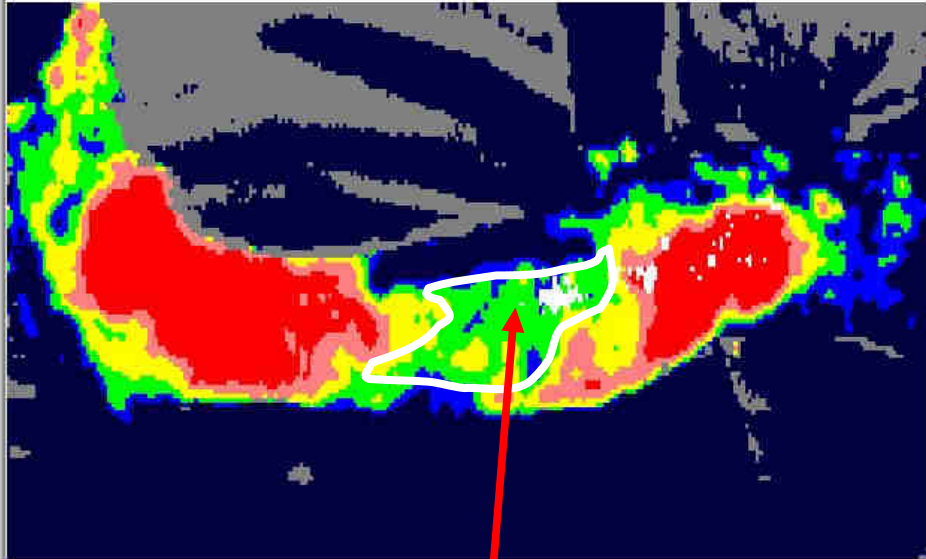
Treatment: 10 minutes daily

Q.LIGHT®



**03 - 08 - 06: Deep 2nd degree burn
Indication for surgery in other hospital**

Blood Flow Image



DEEP 2nd DEGREE BURN

LD Photo Image



Q.LIGHT®



Dept of Plastic & Reconstructive Surgery / UZGent

Start: Q.LIGHT®



Q.LIGHT®



Q.LIGHT®



Full closure / start pressure therapy

Dept of Plastic & Reconstructive Surgery / UZGent