

DIABETIC FOOT: SCALD

Diabetic patient with scald burn

Location: right foot

Male

Age: 56 Years

Start Q.Light[®]: 18/10/2006

Full Closure: 24/11/2006

Total Treatment Time: 5 weeks

Treatment: 10 minutes daily

Scald: Diabetic Patient

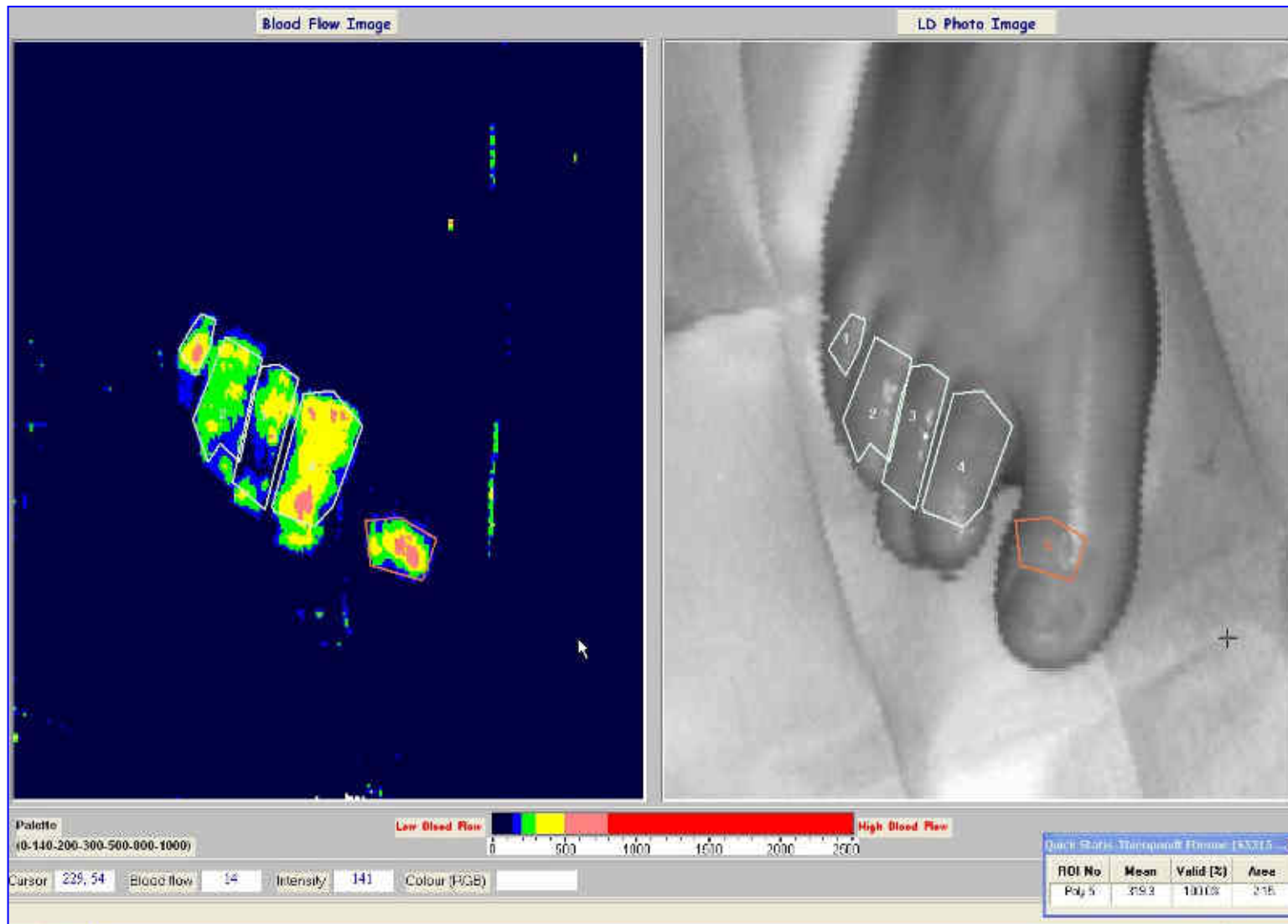


Start: Q.LIGHT®

18 - 10 - 06:
After Debridement



Laser Doppler Imaging



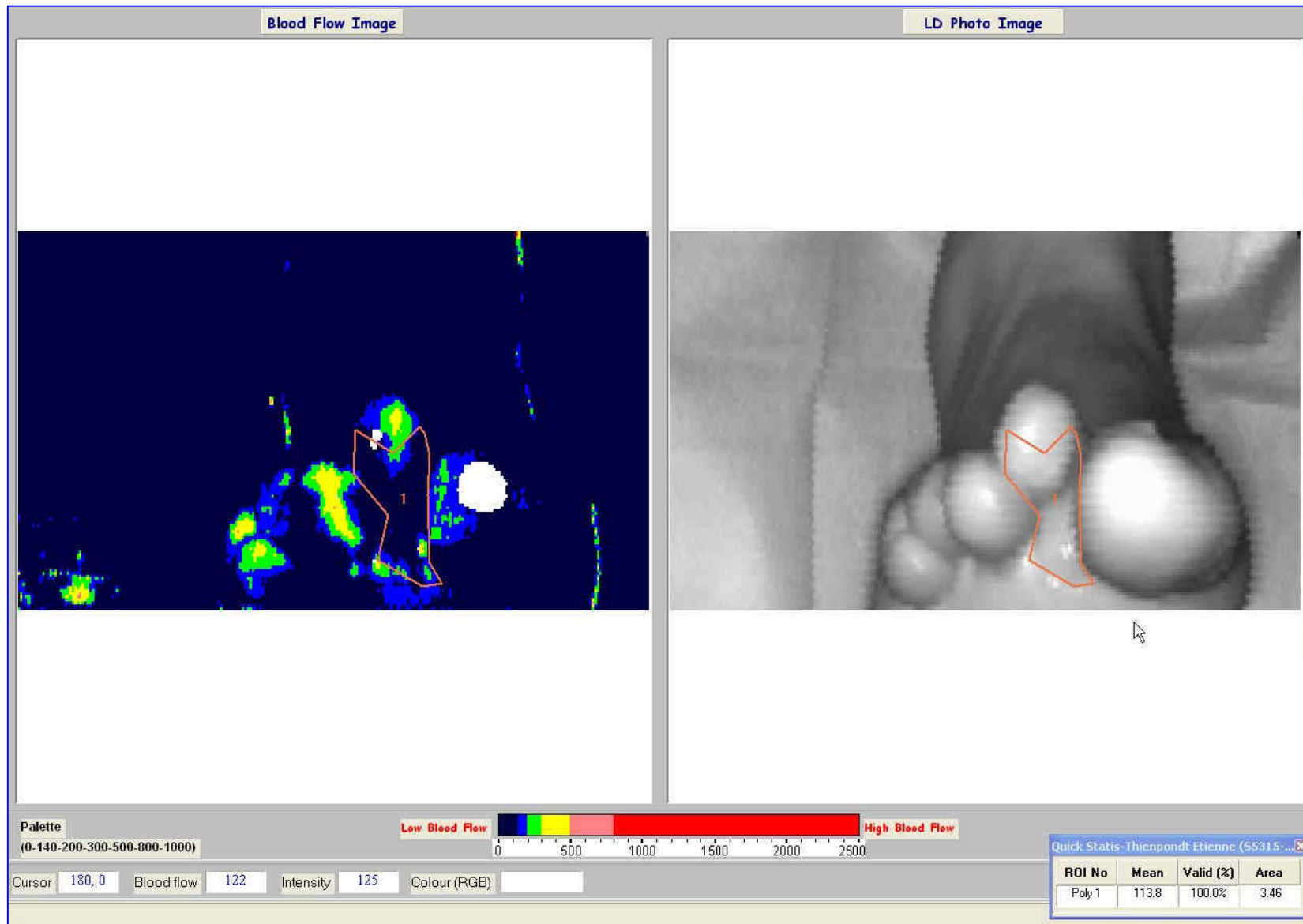
Q.LIGHT®

18 - 10 - 06



Dept of Plastic & Reconstructive Surgery / UZGent

Laser Doppler Imaging



Q.LIGHT®

18 - 10 - 06



Q.LIGHT®

20 - 10 - 06



Q.LIGHT®



Q.LIGHT®

25 - 10 - 06



Dept of Plastic & Reconstructive Surgery / UZGent

Q.LIGHT®

25 - 10 - 06



Q.LIGHT®

30 - 10 - 06



Q.LIGHT®

30 - 10 - 06



Q.LIGHT®



Q.LIGHT®



Q.LIGHT®

30 - 10 - 06



Q.LIGHT®

30 - 10 - 06



Q.LIGHT®

03 - 11 - 06



Q.LIGHT®

03 - 11 - 06



Q.LIGHT®

06 - 11 - 06:

Full closure



Q.LIGHT®

06 - 11 - 06



Q.LIGHT®

09 - 11 - 06



Dept of Plastic & Reconstructive Surgery / UZGent

Q.LIGHT®

15 - 11 - 06



Q.LIGHT®



Q.LIGHT®

24 - 11 - 06:

Full Closure



Q.LIGHT®

24 - 11 - 06:
Follow-Up

